

2026 K4 HATCHBACK GT-LINE

MODEL/OPT.CODE: 2AC3255 / 12
 EXTERIOR COLOR: INTERSTELLAR GRAY
 INTERIOR COLOR: BLACK
 VEHICLE ID NUMBER: 3KPFU5DE6TE362542
 PORT OF ENTRY: LAREDO, TEXAS

Sold To: OH003
 Hallee Kia
 27932 LORAIN ROAD
 NORTH OLMSTED OH 44070

Ship To: OH003



STANDARD FEATURES

STANDARD HATCHBACK EX FEATURES

MECHANICAL
 2.0L Multi-Point Fuel Injection (MPI) 4-Cyl Engine
 Intelligent Variable Automatic Transmission
 Electronic Parking Brake w/ Auto Hold
 Drive Mode Select

ADVANCED DRIVER-ASSISTANCE SYSTEMS

Forward Collision-Avoidance Assist - Cyclist/Jct Turning
 Lane Keeping Assist & Lane Following Assist
 Driver Attention Warning & High Beam Assist
 Blind-Spot Collision-Avoidance Assist
 Rear Cross-Traffic Collision-Avoidance Assist
 Safe Exit Warning
 Smart Cruise Control w/Stop & Go

SAFETY

Dual Front Advanced Airbags
 Front and Rear Seat-Mounted Side Airbags
 Front and Rear Side Curtain Airbags

INTERIOR, COMFORT & CONVENIENCE

12.3" Touchscreen w/Wireless Android Auto & Apple CarPlay
 Kia Connect w/Comp 3-Yr Ultimate.* Where Available**
 SIRIUSXM® w/Free 3-Mo. Subscription*
 Rear View Camera with Dynamic Guidelines
 4.0" Instrument Display
 Smart Key w/ Push Button & Remote Start
 USB Multimedia Port, Front & Rear USB Charge Ports
 Wireless Phone Charger
 Dual-Zone Auto Climate Control w/ 5" Control Display
 SynTex Seating Material
 Heated Front Seats
 60/40 Split-Folding Rear Seats w/ Center Armrest
 Rear Occupant Alert

EXTERIOR

17" Alloy Wheels
 LED Reflector Headlights w/Auto-On/Off & Amber LED DRLs
 LED Tail Lights
 Power Adjustable Heated Outside Mirrors
 Compact Spare Tire

WARRANTY

10 Year/100,000 Mile Limited Powertrain Warranty
 5 Year/60,000 Mile Limited Basic Warranty
 5 Year/60,000 Mile Roadside Assistance

*Additional terms and conditions apply.

**Kia Connect may be currently unavailable for some Model Year 2022 and newer vehicles sold or purchased in Massachusetts; please see owners.kia.com for more information.

NOTE: When you purchase this vehicle, Kia America, Inc. collects personal information you provide to the dealership. For information on our collection and use of personal information and your rights, please see our Privacy Policy on www.kia.com.

MANUFACTURER'S SUGGESTED RETAIL PRICE ▶

\$ 25,990.00

COMPARE HATCHBACK GT-LINE FEATURES

Added to/in place of std Hatchback EX features
 - 18" Alloy Wheels
 - Sport-Tuned Multi-Link Rear Suspension
 - GT-Line Styling w/Gloss Black Exterior Accents
 - Outside Mirror LED Turn Signal Indicators
 - GT-Line Sport Steering Wheel w/Paddle Shifters
 - Power Driver's Seat w/ Power Lumbar

Included
 Included
 Included
 Included
 Included
 Included

ADDITIONAL INSTALLED EQUIPMENT:
 (In addition to or in place of standard features)
 GT-Line Red Interior Color Package

\$295.00

MSRP INCLUDING OPTIONS

\$ 26,285.00

INLAND FREIGHT AND HANDLING

\$ 1,245.00

TOTAL MANUFACTURER'S SUGGESTED RETAIL PRICE ▶

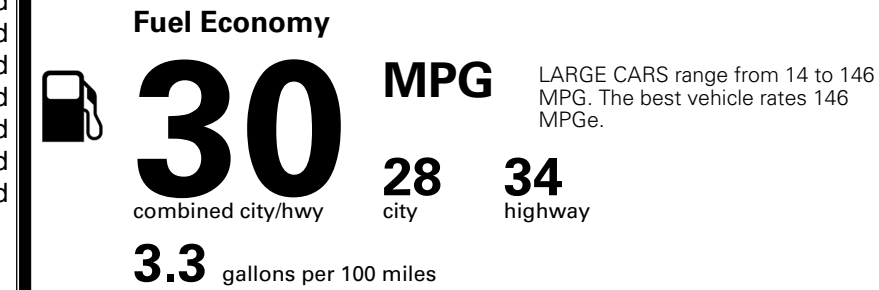
\$ 27,530.00

TOTAL ADDITIONAL WEIGHT:



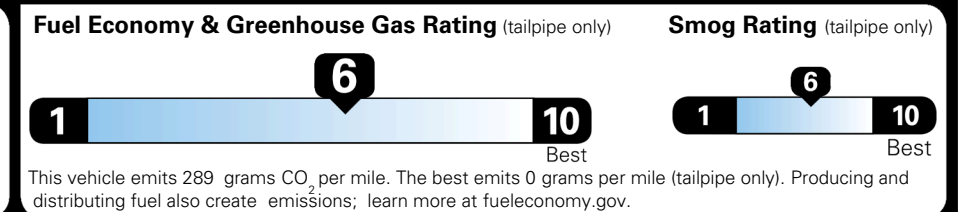
EPA DOT Fuel Economy and Environment

Gasoline Vehicle



You save \$250
 in fuel costs over 5 years compared to the average new vehicle.

Annual fuel cost \$1,650



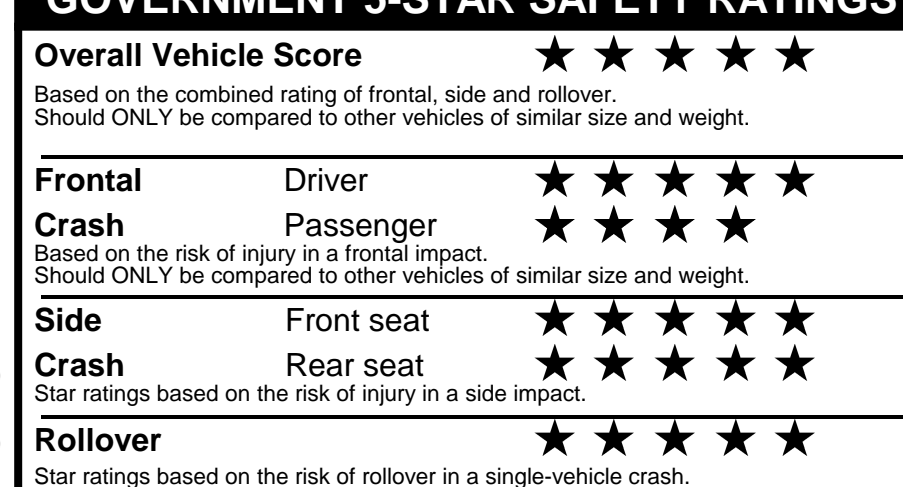
Actual results will vary for many reasons, including driving conditions and how you drive and maintain your vehicle. The average new vehicle gets 29 MPG and costs \$8,500 to fuel over 5 years. Cost estimates are based on 15,000 miles per year at \$ 3.30 per gallon. MPGe is miles per gasoline gallon equivalent. Vehicle emissions are a significant cause of climate change and smog.

fueleconomy.gov

Calculate personalized estimates and compare vehicles



GOVERNMENT 5-STAR SAFETY RATINGS



Star ratings range from 1 to 5 stars (★★★★★) with 5 being the highest.
 Source: National Highway Traffic Safety Administration (NHTSA).
www.safercar.gov or 1-888-327-4236

Manufacturer's suggested retail price includes Manufacturer's recommended pre-delivery service. License and title fees, state and local taxes and other dealer installed options and accessories are not included in the manufacturer's suggested retail price.

PARTS CONTENT INFORMATION

FOR VEHICLES IN THIS CAR LINE U.S./CANADIAN PARTS CONTENT: 20 %

MAJOR SOURCES OF FOREIGN PARTS:
 MEXICO: 45%
 KOREA: 30%

NOTE: PARTS CONTENT DOES NOT INCLUDE FINAL ASSEMBLY, DISTRIBUTION, OR OTHER NON-PARTS COSTS.

FOR THIS VEHICLE FINAL ASSEMBLY POINT: PESQUERIA, NL, MEXICO

COUNTRY OF ORIGIN ENGINE (MOTOR): USA
TRANSMISSION: MEXICO